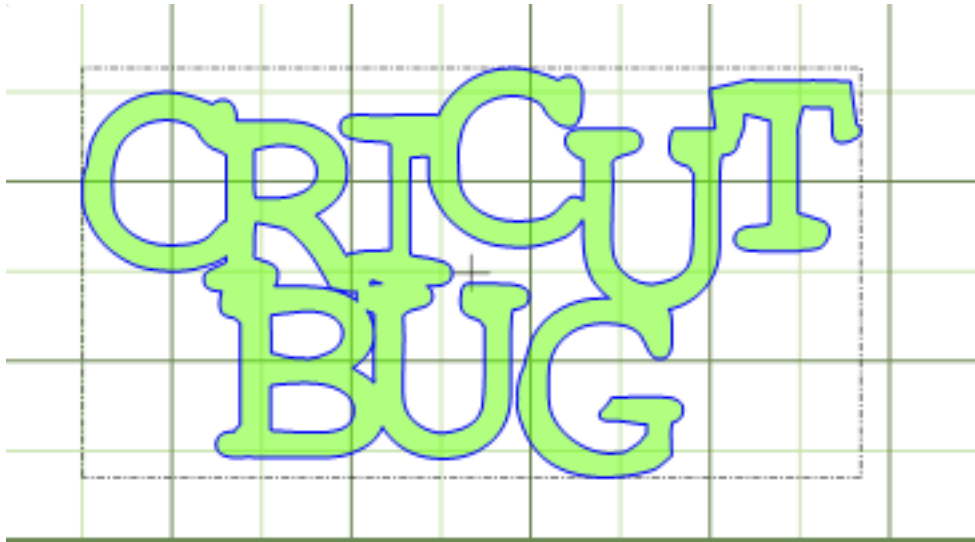
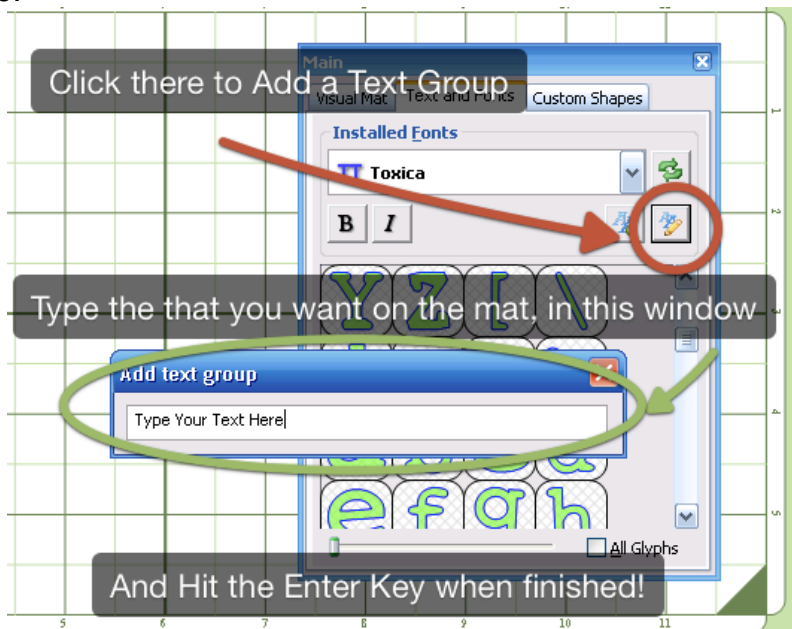


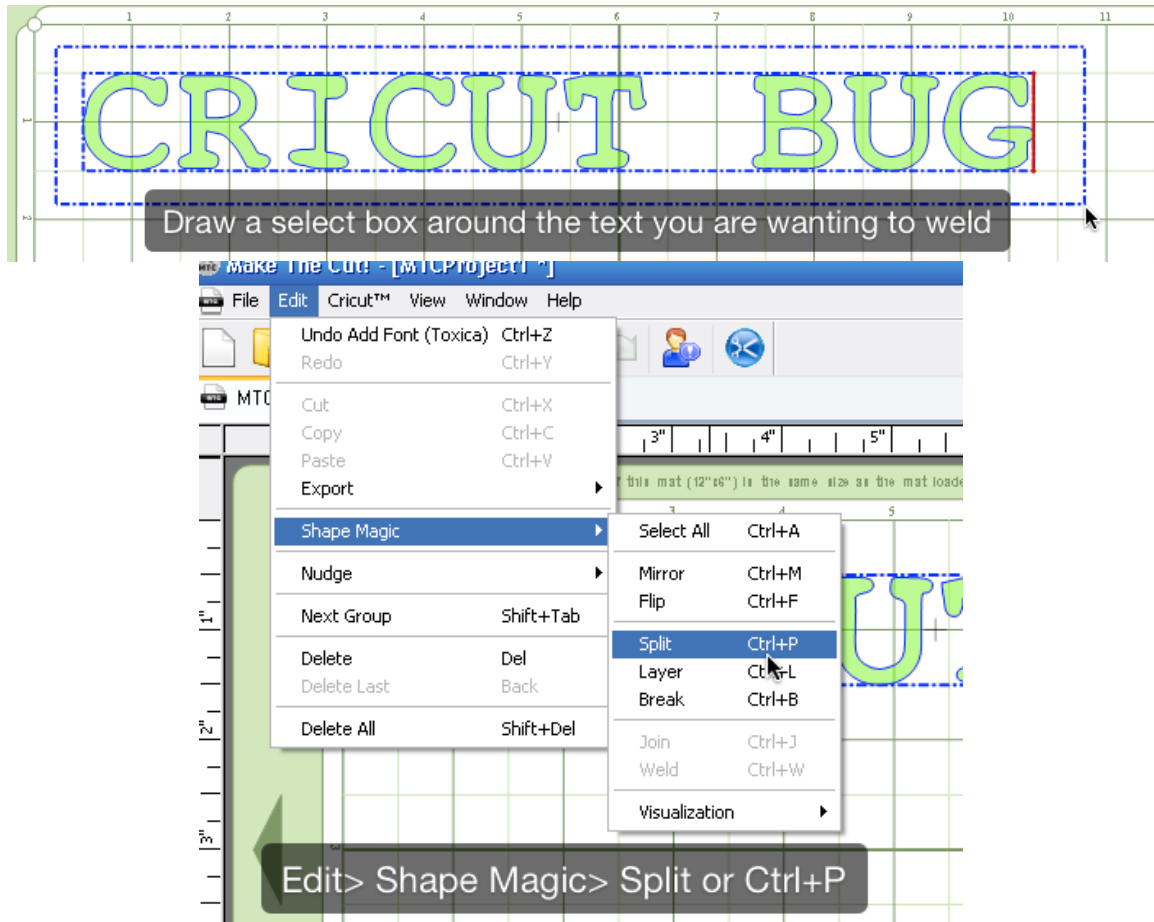
In this tutorial we will cover how to weld basic text. Hopefully this will help you get the results you desire with this software. Below is a very basic example on the finished product of text that is welded together. Welding allows you to fuse objects together so that your cricut will make one continuous cut rather than cutting out individual letters that you will have to piece together.



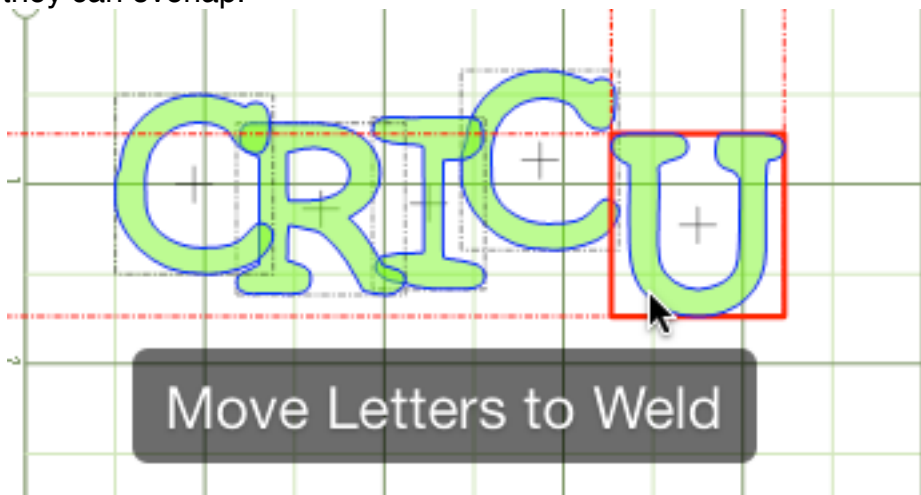
In order to weld and after you have text on your mat you must first select the text making sure the "Blue" Dashed line is around your text/object. Seeing this dashed line allows us to use "**SHAPE MAGIC**" on the selection. See below for visual picture.



Now that we have selected the text the next thing we can either hit **Control + P** or we can go to **Edit> Shape Magic> Split**



After using the Split feature that makes it possible to move letters around so that they can overlap.



So you moved your letters to the location where you want them. Now it's time to weld. Draw another selection box around the text making sure you're getting the "Blue" Dashed Lines around each letter and you can go to **Edit>Shape Magic>Weld or Control + W**

